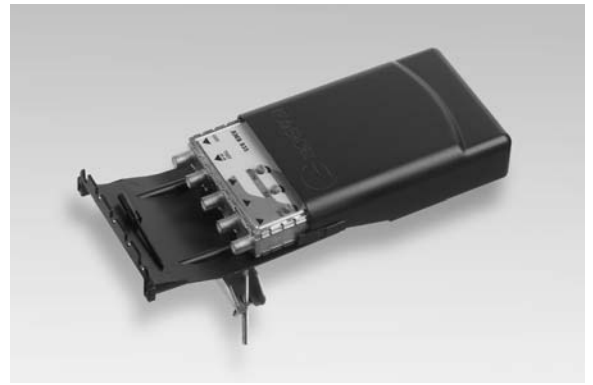


- E** AMPLIFICADOR DE BANDA PARA MÁSTIL
F AMPLIFICATEUR DE BANDE POUR MÂT
GB MAST BAND AMPLIFIER



AMB 800

| E | F | GB | | AMB 801 | AMB 802 DC** | AMB 810 | AMB 820 | AMB 823 | AMB 824 | AMB 830 | AMB 831 | | | | | | | | |
|-------------------------------|-------------------------------|----------------------------|-----------------|---|--------------|---------|---------|---------|---------|------------|---------|----|----------|------------|-----|-----|---------|-----|-----|
| Referencia | Référence | Reference | | 36011 | 36012 | 36010 | 36020 | 36023 | 36024 | 36030 | 36031 | | | | | | | | |
| N.º de entradas | Nbre. d'entrées | No. of inputs | | 1 | | | 2 | | | 3 | | | | | | | | | |
| Bandas | Bandes | Frequency range | | UHF | UHF | Bi;BIII | UHF | Bi;BIII | UHF | Bi;FM;BIII | UHF | FM | BIII;UHF | Bi;FM;BIII | UHF | UHF | Bi;BIII | UHF | UHF |
| Ganancia | Gain | Gain | dB | 38 | 28 | 28 | 38 | 28 | 38 | 28 | 38 | 28 | 28/38 | 28 | 38 | 38 | 28 | 38 | 38 |
| Regulación de Ganancia | Plage de réglage de gain | Gain regulation | dB | 15 | 15 | 25 | 15 | 25 | 15 | 25 | 15 | 25 | 25/15 | 25 | 15 | 15 | 25 | 15 | 15 |
| Nivel Salida DIN 45004B-60 | Niveau sortie DIN 45004B-60 | Output level DIN 45004B-60 | dBµV | 114 | | | | | | | | | | | | | | | |
| Impedancia entrada / salida | Impédance entrée/sortie | Input / Output impedance | Ω | 75 | | | | | | | | | | | | | | | |
| Figura de ruido | Facteur de bruit | Noise figure | dB | 3 | 4 | 5 | 3 | 5 | 3 | 5 | 3 | 5 | 5/3 | 5 | 6 | 6 | 5 | 6 | 6 |
| Rechazo Fuera de Banda | Réjection hors bande | Rejection out of band | dB | Conforme con EN 50083-2 "Antenna Input Resistance" Inmunidad interna a señales de perturbación fuera de banda Selon norme EN 50083-2 "Antenna Input Resistance" Immunité interne aux signaux de perturbation hors bande Compliance with EN 50083-2 "Antenna Input Resistance" Internal immunity against unwanted signals from out of band | | | | | | | | | | | | | | | |
| Salida Test | Sortie Test | Test output | dB | -30 dB (from main output) | | | | | | | | | | | | | | | |
| Alimentación | Alimentation | Power / Supply | V _{cc} | 24 ± 10% | | | | | | | | | | | | | | | |
| Consumo | Consommation | Consumption | mA | 93 | | | | | | 100 | | | 93 | | | | | | |
| Dimensiones | Dimensions | Dimensions | mm | 170 x 105 x 50 | | | | | | | | | | | | | | | |
| Temperatura de funcionamiento | Température de fonctionnement | Operating temperature | °C | - 20 ÷ 60 | | | | | | | | | | | | | | | |
| Peso | Poids | Weight | Kg | 0,355 | | | | | | | | | | | | | | | |

| E | F | GB | | AMB 832* | | | AMB 834* | | | AMB 835 | | | AMB 836** | | | AMB 840 | | | | | |
|-------------------------------|-------------------------------|----------------------------|-----------------|---|------------------|------------------|----------|------------------|------------------|---------|------|-----|-----------|----------|-----|------------|------------------|------------------|------------------|--|--|
| Referencia | Référence | Reference | | 36032 | | | 36034 | | | 36035 | | | 36047 | | | 36055 | | | | | |
| N.º de entradas | Nbre. d'entrées | No. of inputs | | 3 | | | | | | | | | | | | | | | 4 | | |
| Bandas | Bandes | Frequency range | | Bi;BIII | UHF ₁ | UHF ₂ | Bi;FM | UHF ₁ | UHF ₂ | Bi | BIII | UHF | FM | BIII;DAB | UHF | Bi;FM;BIII | UHF ₁ | UHF ₂ | UHF ₃ | | |
| Ganancia | Gain | Gain | dB | 28 | 38 | 38 | 28 | 38 | 38 | 28 | 28 | 38 | 18 | 18 | 28 | 28 | 34 | 33 | 33 | | |
| Regulación de Ganancia | Plage de réglage de gain | Gain regulation | dB | 25 | 15 | 15 | 25 | 15 | 15 | 25 | 25 | 15 | 15 | 15 | 15 | 25 | 15 | 15 | 15 | | |
| Nivel Salida DIN 45004B-60 | Niveau sortie DIN 45004B-60 | Output level DIN 45004B-60 | dBµV | 114 | | | | | | | | | | | | | | | | | |
| Impedancia entrada / salida | Impédance entrée/sortie | Input / Output impedance | Ω | 75 | | | | | | | | | | | | | | | | | |
| Figura de ruido | Facteur de bruit | Noise figure | dB | 5 | 3 | 3 | 5 | 3 | 3 | 5 | 5 | 3 | 6 | 6 | 4 | 5 | 6 | 7 | 7 | | |
| Rechazo Fuera de Banda | Réjection hors bande | Rejection out of band | dB | Conforme con EN 50083-2 "Antenna Input Resistance" Inmunidad interna a señales de perturbación fuera de banda Selon norme EN 50083-2 "Antenna Input Resistance" Immunité interne aux signaux de perturbation hors bande Compliance with EN 50083-2 "Antenna Input Resistance" Internal immunity against unwanted signals from out of band | | | | | | | | | | | | | | | | | |
| Salida Test | Sortie Test | Test output | dB | -30 dB (from main output) | | | | | | | | | | | | - | | | | | |
| Alimentación | Alimentation | Power / Supply | V _{cc} | 24 ± 10% | | | | | | | | | | | | | | | | | |
| Consumo | Consommation | Consumption | mA | 93 | | | | | | 70 | | | 100 | | | | | | | | |
| Dimensiones | Dimensions | Dimensions | mm | 170 x 105 x 50 | | | | | | | | | | | | | | | | | |
| Temperatura de funcionamiento | Température de fonctionnement | Operating temperature | °C | - 20 ÷ 60 | | | | | | | | | | | | | | | | | |
| Peso | Poids | Weight | Kg | 0,355 | | | | | | | | | | | | | | | | | |

| Equalización selectiva | Filtres à faille | Selective equalization | |
|------------------------|----------------------------|------------------------|---|
| | Notch 1 390 MHz 660 MHz | | 3 Filtros de UHF sintonizables en la línea de amplificación general 3 failles UHF ajustable dans la ligne principale d'amplification 3 tunable UHF filters in main amplification line |
| | Notch 2 445 MHz 720 MHz | dB | |
| | Notch 3 600 MHz 975 MHz | | |

UHF₁: 21...37
UHF₂: 38...69

* Otros cortes disponibles bajo demanda.
Autres découpages disponibles sur demande.
Other frequencies available under request.

** Con paso de corriente por entrada UHF. 24 V_{cc}, 30 mA.
Avec passage de courant vers l'entrée UHF. 24 V_{cc}, 30 mA.
With DC pass at UHF input. 24 V_{cc}, 30 mA.

| | | | | | | | | |
|---|--------------------------|--------------------------|---|--------------------------|--------------------------|---|--------------------------|--------------------------|
| B | UHF ₁ : 21-24 | UHF ₂ : 26-69 | A | UHF ₁ : 21-41 | UHF ₂ : 43-69 | W | UHF ₁ : 21-54 | UHF ₂ : 55-69 |
| T | UHF ₁ : 21-29 | UHF ₂ : 30-69 | R | UHF ₁ : 21-45 | UHF ₂ : 46-69 | U | UHF ₁ : 21-56 | UHF ₂ : 57-69 |
| N | UHF ₁ : 21-37 | UHF ₂ : 38-69 | S | UHF ₁ : 21-47 | UHF ₂ : 48-69 | C | UHF ₁ : 21-59 | UHF ₂ : 60-69 |
| V | UHF ₁ : 21-39 | UHF ₂ : 41-69 | Q | UHF ₁ : 21-49 | UHF ₂ : 50-69 | | | |



E**FILTROS NOTCH**

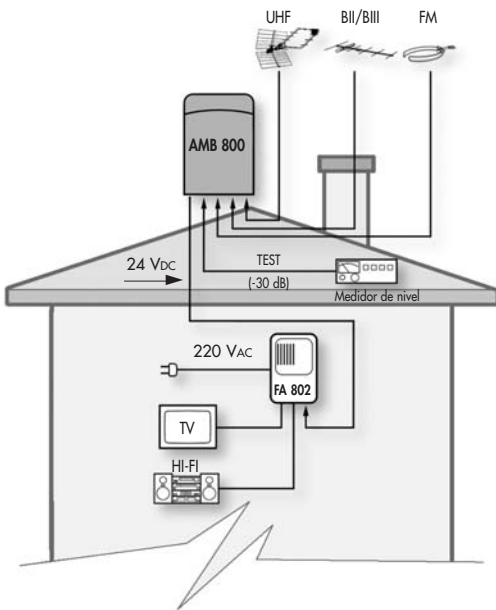
- Los equipos incorporan 3 filtros Notch que pueden ser ajustados en UHF.
- Los filtros salen de fábrica ajustados fuera de banda.

RECHAZOS FUERA DE BANDA

- Incorporan filtros de alto rechazo a señales fuera de banda, lo que les hace especialmente indicados para su aplicación en zonas con alta densidad de emisiones radioeléctricas, como la telefonía móvil, transmisiones trunking, comunicaciones inalámbricas, etc.
- Fabricados de acuerdo a la norma EN 50083-2 "Antena Input Resistance".

FUENTE DE ALIMENTACIÓN

- Los amplificadores de la serie AMB 800 deben alimentarse con FA 802 para cumplir las especificaciones anteriormente descritas.

**F****FILTRES A FAILLE**

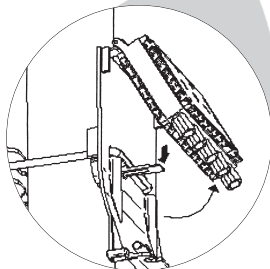
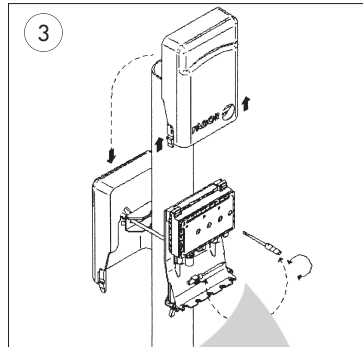
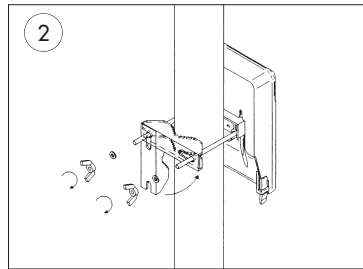
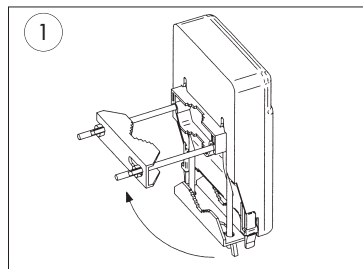
- Les équipements disposent 3 filtres a faille qui peuvent être réglés en UHF.
- Les filtres sont réglés hors bande en usine.

RÉJECTION HORS BANDE

- Incorporent des filtres haute-réjection à signaux hors-bande, ce qui les rend tout spécialement indiqués pour leur application dans des zones à haute densité d'émissions radioélectriques, telles que celles de téléphonie mobile, transmissions trunking, communications sans fil, etc.
- Fabriqués conformément à la norme EN 50083-2 "Antenna Input Resistance".

ALIMENTATION

- Les amplificateurs de la série AMB 800 doivent être alimentés avec FA 802, afin de respecter les spécifications mentionnées ci-dessus.

**GB****NOTCH FILTERS**

- The equipment includes 3 notch filters which can be adjusted in UHF.
- The filters leave the factory set out of band.

REJECTION OF SIGNALS OUT OF BAND

- Include high rejection filters against signals out of band range, which make them especially prepared for applications in areas of high density of radio-electric emissions like mobile telephony, trunking transmissions, wireless communications, etc.
- Manufactured according to norm EN 50083-2, "Antenna Input Resistance".

POWER SUPPLY

- AMB 800 series amplifiers must be powered by FA 802, to comply with the specifications described above.

| | |
|---|--|
| FAGOR | DECLARACION DE CONFORMIDAD DECLARATION DE CONFORMITÉ DECLARATION OF CONFORMITY DECLARAÇÃO DE CONFORMIDADE |
| Fabricante/ Fabricant/ Manufacturer/ Fabricante : | FAGOR ELECTRONICA, S.COOP. |
| Dirección/ Adresse/ Address/ Direção : | Bº San Andrés s/n - P.O. Box 33 20500 MONDRAGON (Guipúzcoa) Spain |
| NIF / VAT : | F-20 027975 |
| Declara bajo su exclusiva responsabilidad la conformidad del producto : Declare, sous notre responsabilité, la conformité du produit : Declare under our own responsibility the conformity of the product : Declara exclusiva responsabilidade a conformidade do produto : | |
| SERIE AMB 800 | |
| Según los requerimientos de las Directivas del Parlamento Europeo: Selon les especifications des Directives du Parlement Européen : According to the specifications of directives of the European Parliament: Com as especificações da Directivas do Parlamento Europeu: | |
| EMC | 89/336/EEC |
| LVD | 73/23/EEC |
| Para su evaluación se han aplicado las Normas: Pour l'évaluation ont été appliqués les Normes: For the evaluation, the following Standards were applied: Para a avaliação, as seguintes Normas foram aplicados : | |
| UNE - EN 50083-1: 1996 + A1: 1999 + A2: 1999 UNE - EN 50083-2: 1996 + A1: 2000 | |
| Fecha: | JUN. 2003 |
| Date: | JUN. 2003 |
| Firma: | |
| Signature: | J.M. Saiz |
| Jefe Calidad Tratamiento de Señal Head of Quality Dept., Signal Processing | |

**Fagor Electrónica, S.Coop.**

San Andrés, s/n.
 E-20500 Mondragón (Spain)
 Tel. +34 943 712 526
 Fax +34 943 712 893
 E- mail: rf.sales@fagorelectronica.es
 www.fagorelectronica.com

